

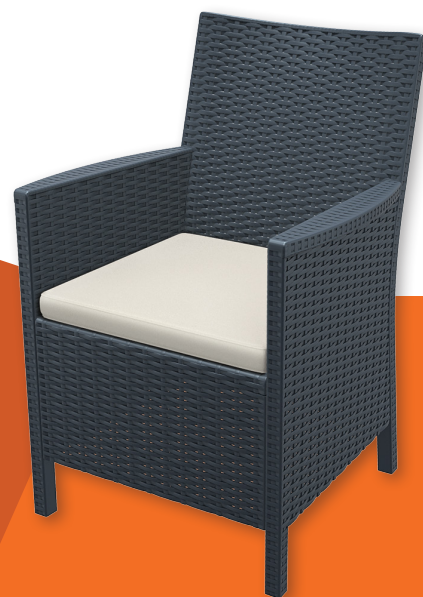
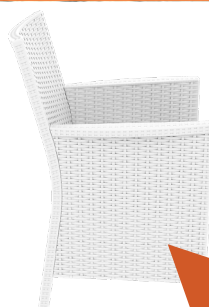


Officebetter

Siesta
exclusive



CALIFORNIA TUB CHAIR



ABOUT THE CALIFORNIA CHAIRS

The California Tub Chair is an injection moulded resin chair, the non-metallic frame will never unravel, rust or decay, with rattan look seat and back. Reinforced with glass fibre to strengthen the legs and boost the weight capacity. The California Tub Chair is designed for outdoor use, UV stable and weather proof, it will not fade or go brittle in Australia's harsh outdoor conditions. Strong yet lightweight, this chair will add class to your venue. It's sleek profile is pleasant to the eye so this chair is as charming as it is functional. Very easy to clean, just hose it down.

FEATURES

- Suitable for indoor and outdoor commercial use
- Made of UV stabilised polypropylene reinforced with glass fibre
- Seat: Beige cushion available at an extra cost – 50mm thick cushion covered with polyester fabric & finished with piping, washable & suitable for outdoor use
- Dimensions: 590W x 630D x 900H x 420 Seat Height
- Arm Height: 650H
- Unit Weight: 10kg, SWL: 150kg, Supplied unassembled –



- easy to assemble
- Weather resistant, UV Stabilised, Glass fibre reinforced
- Stocked In: Anthracite, Chocolate – Special Order
- Colours: White
- Replaceable feet
- CATAS Tested
- Matching Products: All Resin Rattan Range Products
- Made in Europe
- 3 Month warranty on cushions

DURAFURN